



In line pressure compensated single-acting flow control valves

FT 2270/5

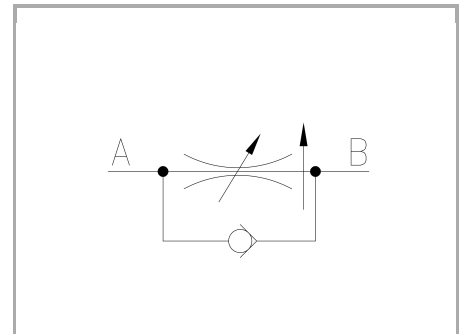
Compensated single-acting flow control valves available from 1/4" to 1" BSPP, max. working pressure 250 Bar, adjustable oil flow rate from 2 to 140 Lt./min. (depending on the size) - Precision in compensation +/- 5% max

Single-acting control

Pressure compensated In line or panel mounting

Stainless Steel AISI 316

Connections: F - F Female - Female



Technical information

Technical description

The pressure compensated valves FT 2270/5 are essentially composed of an adjustable orifice and of a pressure compensator piston. The check valves, realized through a valve poppet, reduce the number of the components in movement. Inside the base there are wide transverse sections which appreciably reduce the loss of pressure. The accuracy of internal machining ensures a very low hysteresis and a remarkable precision in compensation that, on this series, is about 4% of the flow rate. The accurate checks on all products guarantee a proper functioning of our valves also in the heavy working conditions and an excellent reliability over the years.

Materials

CORPO BASE / BASE BODY	Acciaio INOX / Stainless Steel AISI 316
SPILLO DI REGOLAZIONE / ADJUSTING NEEDLE	Acciaio INOX / Stainless Steel AISI 630
CORPO CARTUCCIA / CARTRIDGE BODY	Acciaio/Steel 39 S Ni Cr Mo 3-UNI EN 10083
GUARNIZIONI / GASKETS	FPM
ANELLI ANTIESTRUSIONE / ANTIEXTRUSION RINGS	PTFE
MANOPOLA TIPO MA - RA / KNOB TYPE MA - RA	Alluminio/Aluminum GD AISi12 - UNI EN AB 46100
MANOPOLA TIPO MP / KNOB TYPE MP	ABS
MANOPOLA TIPO INOX / KNOB TYPE INOX	Acciaio INOX / Stainless Steel AISI 316

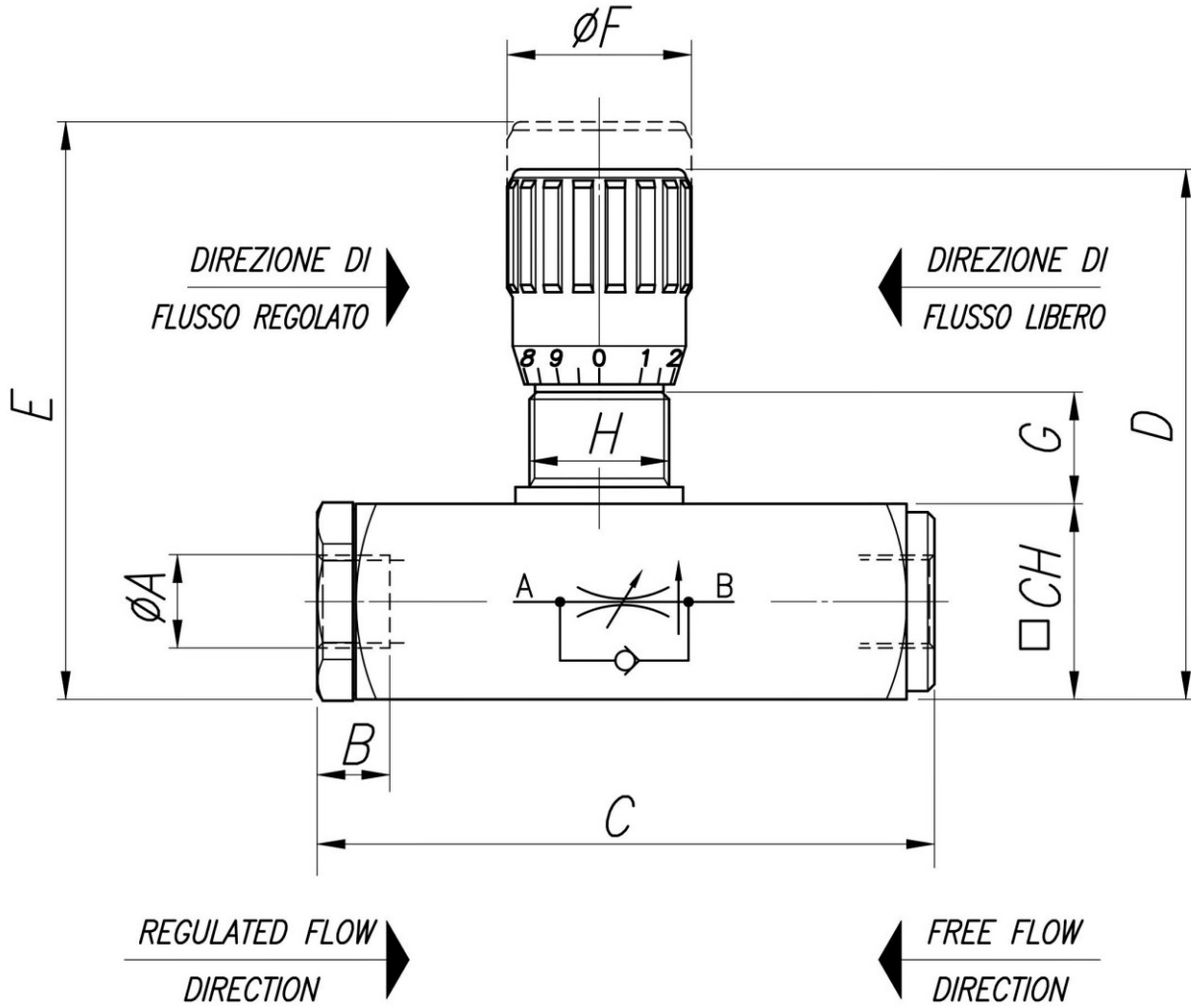


Technical data

TIPO / TYPE	PRESSIONE ESERCIZIO BAR / WORKING PRESSURE BAR	MIN. ΔP DI FUNZIONAMENTO BAR / MIN. WORKING ΔP BAR	TEMPERATURA ESERCIZIO / WORKING TEMPERATURE	GRADO DI FILTRAZIONE μm / FILTRATION GRADE μm
14	250	5	-20°C/+160°C	25
38	250	7	-20°C/+160°C	25
12	250	10	-20°C/+160°C	25
34	250	10	-20°C/+160°C	25

Dimensional tables and drawings

TIPO / TYPE	A UNI 338	B	C	D	E	ØF	G	H	CH	PESO / WEIGHT KG
14	1/4" G	12,5	94	81,5	88,5	27	15	M20x1	30	0,580
38	3/8" G	13	110,5	94,5	103	33	17	M25x1,5	35	0,940
12	1/2" G	15,5	137	112	122	38	18	M30x1,5	45	1,830
34	3/4" G	17	163	138	150	47	24	M40x1,5	55	3,350





Flow rate curves

