



## In line stainless steel double-pilot check valves

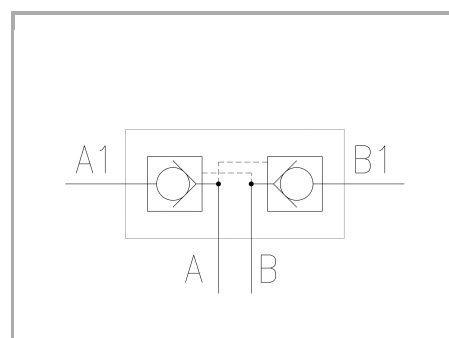
### FT 2257/8

In line double-pilot check valves available from 1/4" to 1/2" bsp, Max. working pressure 400 Bar, oil flow rate up to 140 Lt./min. (depending on the size)

**In line**

**Pilot control**

**Stainless Steel AISI 316**



## Technical information

### Technical description

Belonging to the same range of the in line single-acting valves, except that, thanks to a specific signal of pilot operated pressure, they allow the valve to open in the usually flow direction. The high level of pilot ratio, realized in the design phase, enables rapid and complete opening for the whole duration of the desired cycle. The construction material used for the seal pistons, the hardened treatment undergone, as well as the finish-grinding guarantee a perfect seal even in particularly heavy working conditions. Applications: The above mentioned valves are generally used for blocking work circuits under pressure, such as security against falling loads in the event of pipe braking or against undesired movements of hydraulically locked loads.

### Materials

|   |   |
|---|---|
| <b>CORPO VALVOLA / BODY VALVE</b>       | <b>Acciaio INOX / Stainless Steel AISI 316</b>  |
| <b>VALVOLA DI RITEGNO / CHECK VALVE</b> | <b>Acciaio/Steel 39 Ni Cr Mo 3-UNI EN 10083</b> |
| <b>MOLLA / SPRING</b>                   | <b>Acciaio/Steel C 85-UNI EN 10089</b>          |

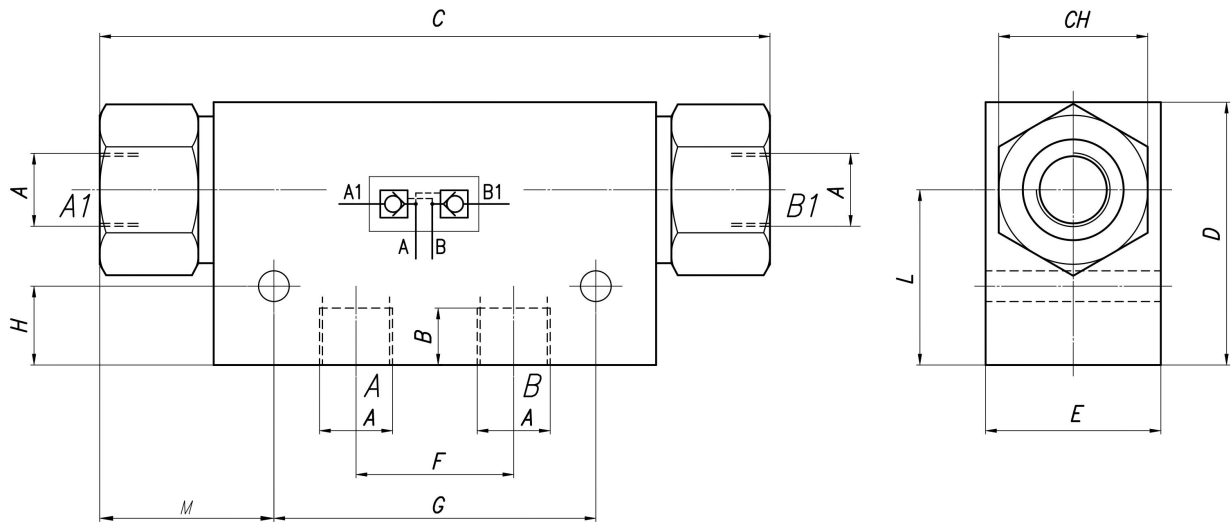
### Technical data

| TIPO / TYPE | PRESSIONE ESERCIZIO BAR / WORKING PRESSURE BAR | MIN. PRESSIONE SCOPPIO BAR / MIN. BURSTING PRESSURE BAR | TEMPERATURA ESERCIZIO / WORKING TEMPERATURE | GRADO DI FILTRAZIONE µm / FILTRATION GRADE µm | RAPPORTO DI PILOTAGGIO / PILOT RATIO | MIN. PRESSIONE DI APERTURA BAR / MIN. OPENING PRESSURE BAR |
|-------------|--|---|---|---|--------------------------------------|--|
| 14          | 400  | 1600  | -20°C/+130°C                                | 25  | 1-7,6                                | 0,5  |
| 38          | 400  | 1600  | -20°C/+130°C                                | 25  | 1-7,0                                | 0,5  |
| 12          | 400  | 1600  | -20°C/+130°C                                | 25  | 1-7,4                                | 0,5  |



## Dimensional tables and drawings

| TIPO / TYPE | A<br>UNI 338 | B    | C   | D  | E  | F  | G    | H  | L  | CH | VITI / SCREWS | PESO / WEIGHT<br>KG |
|-------------|--------------|------|-----|----|----|----|------|----|----|----|---------------|---------------------|
| 14          | 1/4" G       | 12,5 | 126 | 45 | 35 | 27 | 60   | 10 | 29 | 28 | M6x45         | 1,088               |
| 38          | 3/8" G       | 12,5 | 153 | 60 | 40 | 36 | 73,5 | 18 | 40 | 34 | M6x50         | 1,360               |
| 12          | 1/2" G       | 15,5 | 193 | 65 | 50 | 46 | 94   | 15 | 40 | 41 | M6x60         | 3,321               |





## Flow rate curves

